



# AX5400 Pro 6-Stream Gigabit Wi-Fi 6 Router

Faster. Broader. Unstoppable.



Archer AX5400 Pro

- Warp-Speed Wi-Fi up to 5.4 Gbps<sup>†</sup>
- Extensive Coverage with 6 High-Performance Antennas

- Connects More Devices with OFDMA + MU-MIMO<sup>\*\*</sup>
- Ideal for Internet Plans up to 2.5 Gbps<sup>\*\*\*</sup>

Works with All Internet Providers<sup>\*\*</sup>

# Highlights

## Wi-Fi 6<sup>E</sup> Faster. Broader. Unstoppable.



### Gigabit Wi-Fi for 8K Streaming

Stream multiple 8K videos and download large files at high speed, thanks to an advanced 4x4 HE160 structure for up to 4804 Mbps on the 5 GHz band.<sup>†‡</sup>



### Connect Numerous Devices

OFDMA and MU-MIMO transmit data to multiple devices simultaneously across 6 streams, drastically reducing lag and allowing more applications to run at the same time.<sup>‡</sup>



### Smart Power Saving

Target Wake Time schedules the connection time of battery-powered devices to reduce their power consumption.<sup>‡</sup>

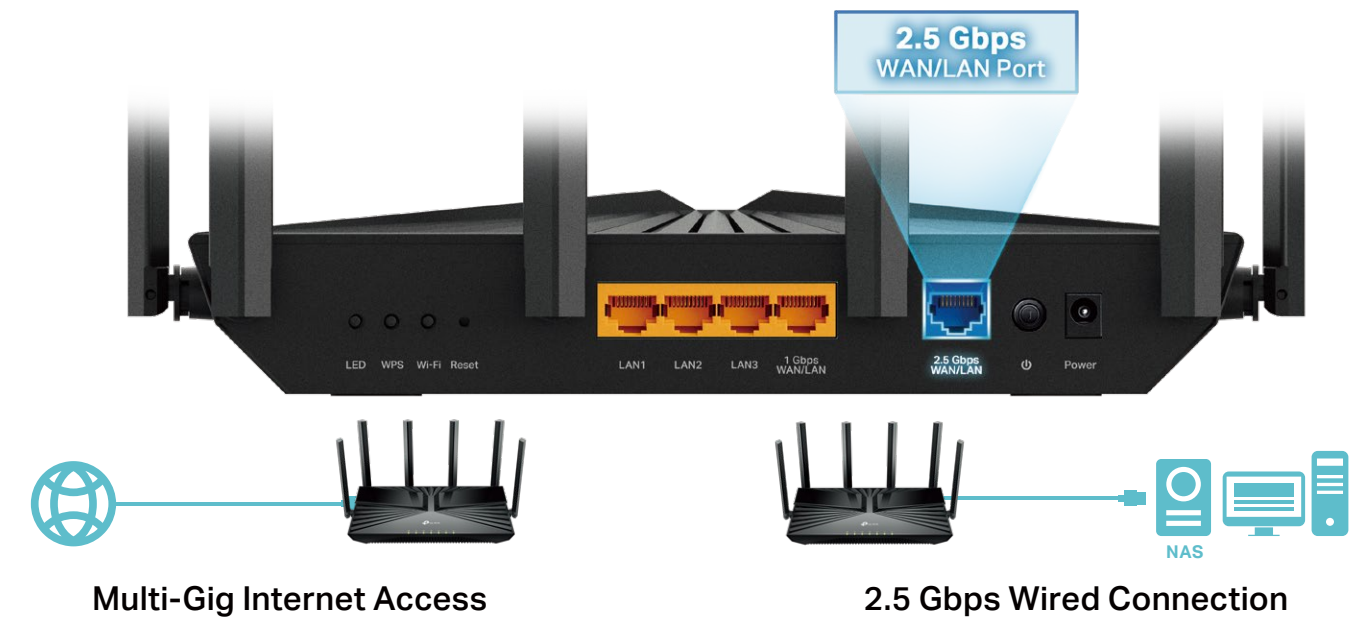


### Backwards Compatible

Take your Wi-Fi to the next level while being backwards compatible with 802.11a/b/g/n/ac Wi-Fi standards.

## Multi-Gig Internet Connectivity

A 2.5 Gbps port make full use of gigabit speeds from your local ISP. Break through the 1G bottleneck and drive your devices to peak performance. WAN/LAN support gives you remarkable flexibility to tailor both ports to fit your network's needs.<sup>\*\*\*</sup>



# Highlights

## TP-Link HomeShield

Manage online time and block inappropriate content to maintain healthy online habits with Parental Controls. Quality of Service (QoS) and Network Protection further keep your home network smooth and secure.△



## WPA3 Security

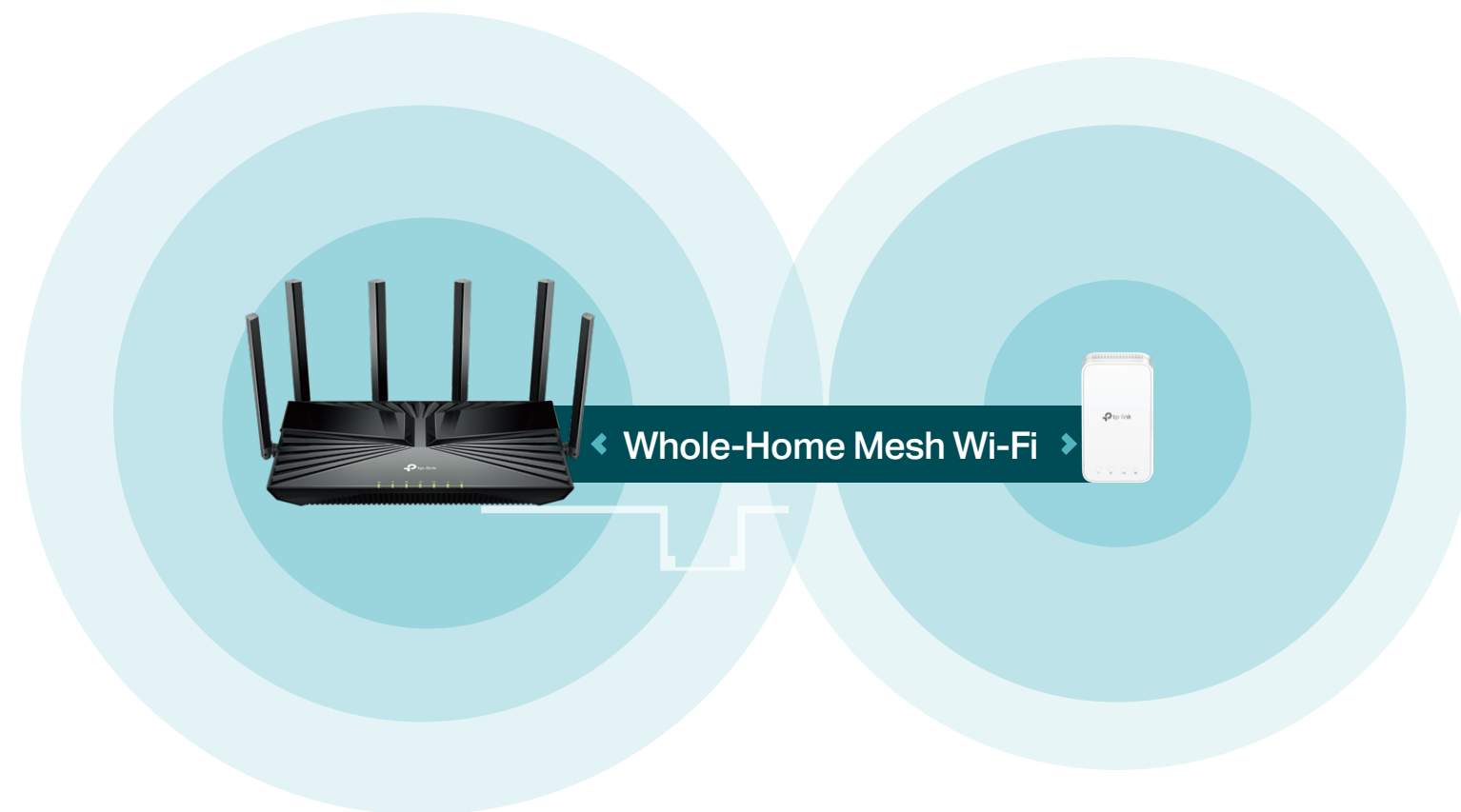
The latest Wi-Fi security protocol, WPA3, brings new capabilities to improve cybersecurity. More secure encryption in Wi-Fi password safety and enhanced protection against brute-force attacks combine to safeguard your home Wi-Fi.\*



# Highlights

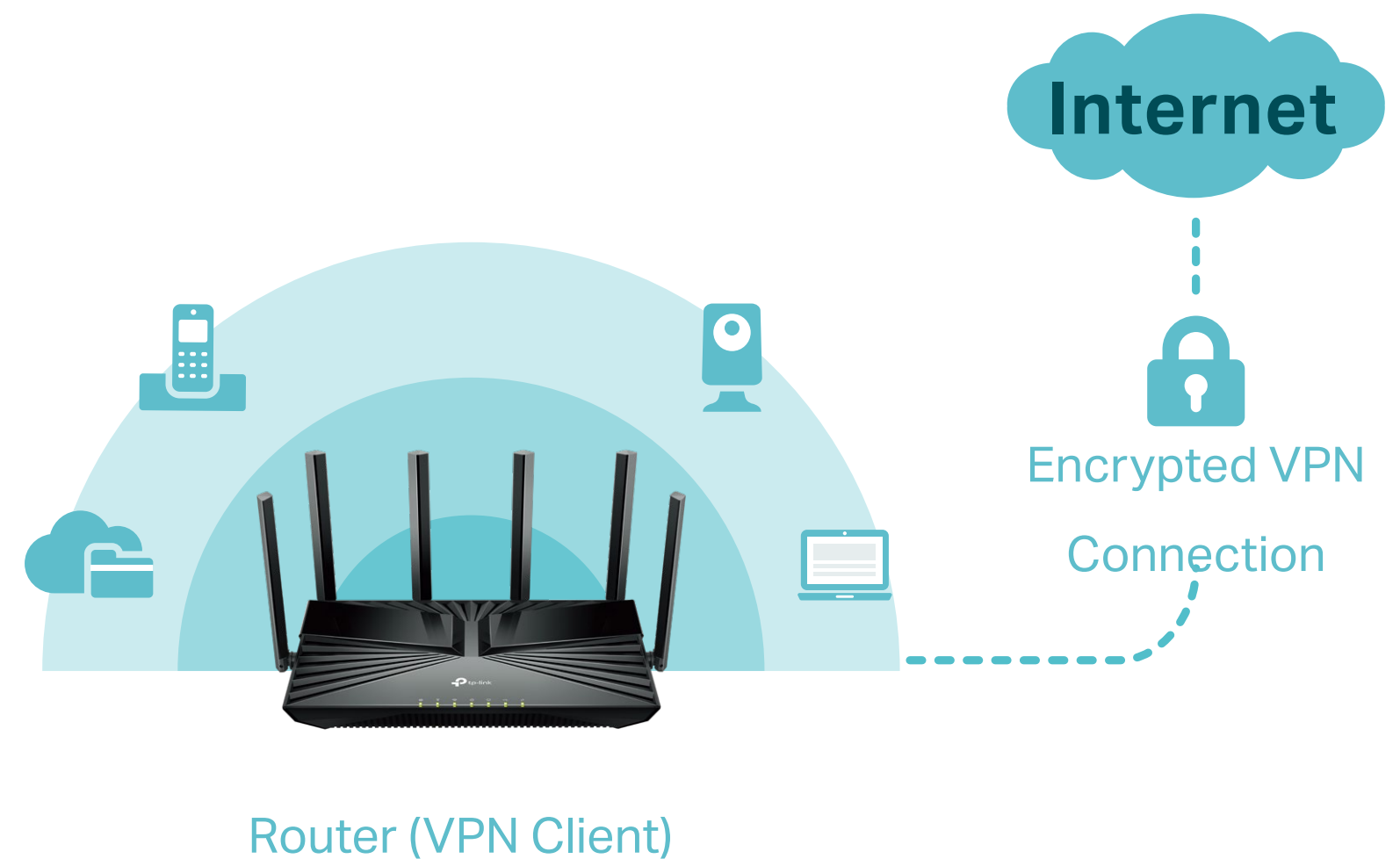
## Flexible Whole-Home Wi-Fi

Six high-performance antennas and Beamforming deliver broad coverage. Furthermore, Archer AX5400 Pro supports OneMesh™ to form seamless whole-home coverage, preventing drops and lag when moving between signals.



## Work from Home with VPN

Allow specified devices in your home network to access remote VPN servers without needing to install VPN software on every device. Archer AX5400 Pro can run both the VPN and ordinary internet connections at the same time, delivering security and flexibility.



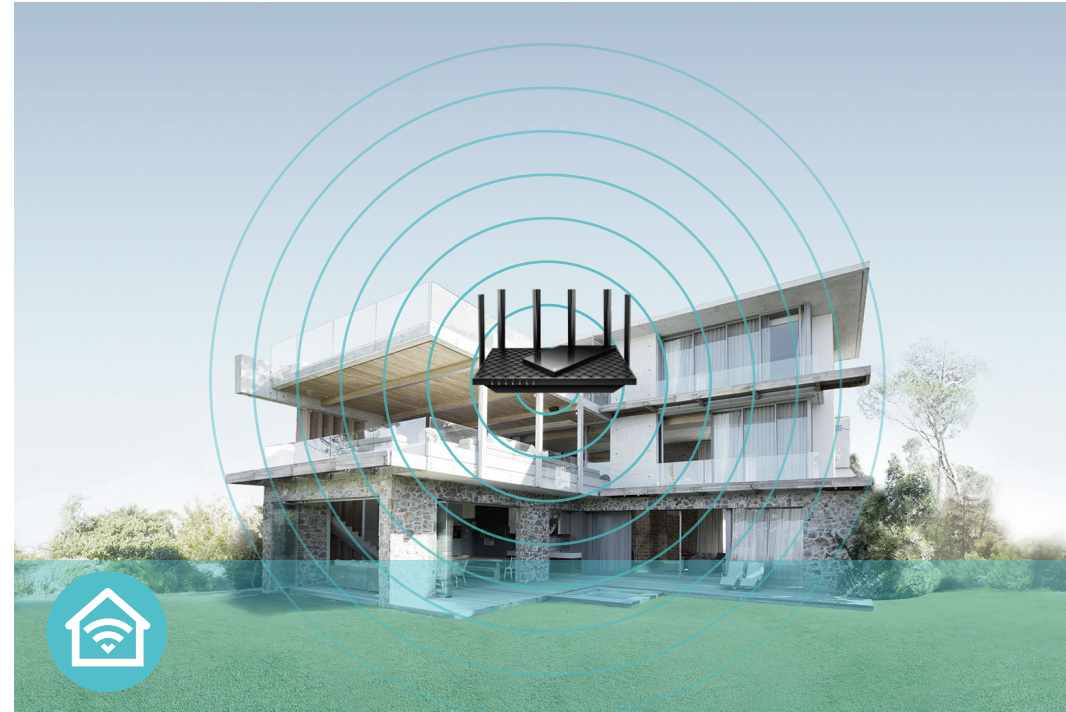


# Features



## Speed

- **Warp-Speed Wi-Fi** – 5.4 Gbps Wi-Fi for faster browsing, streaming, and downloading—all at the same time<sup>†</sup>
- **Wi-Fi 6 Technology** – Wi-Fi 6 (802.11ax) features advanced technologies, including OFDMA, MU-MIMO, HE160, and 1024-QAM, drastically increasing the speed and efficiency of your entire network<sup>‡</sup>
- **Connect More, Stay Fast** – Supports MU-MIMO and OFDMA to reduce congestion and quadruple your average throughput<sup>§</sup>



## Wi-Fi Range

- **Ultimate Range Wi-Fi** – Six high-gain external antennas deliver a Wi-Fi signal to every corner of your home, making all of your connections more efficient and stable
- **Beamforming Technology** – Concentrates Wi-Fi signals towards individual devices to ensure stronger connections
- **Seamless OneMesh network** – Transfer between signals without any drops or lag and manage your whole network using a centralized panel

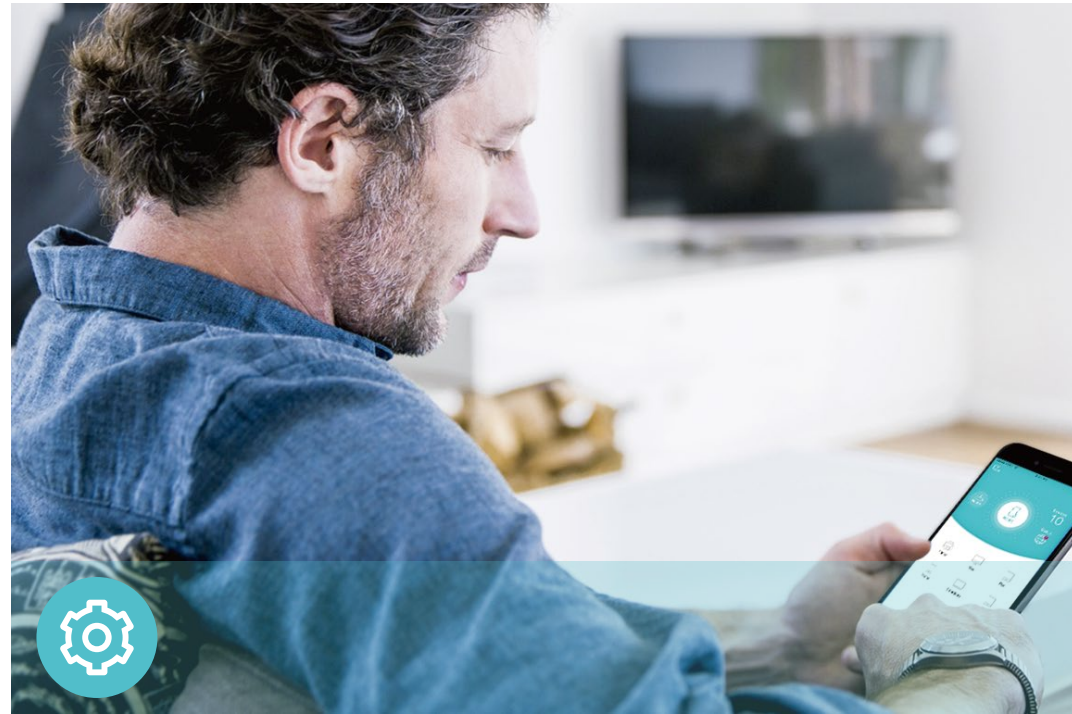


## Reliability

- **Secure VPN Access** – Connects to a private network with a safe and secure OpenVPN and PPTP VPN connection
- **Airtime Fairness** – Balances bandwidth of connected devices to improve overall throughput and efficiency
- **Smart Connect** – Intelligently switches each device's connection to the optimum available Wi-Fi band



# Features



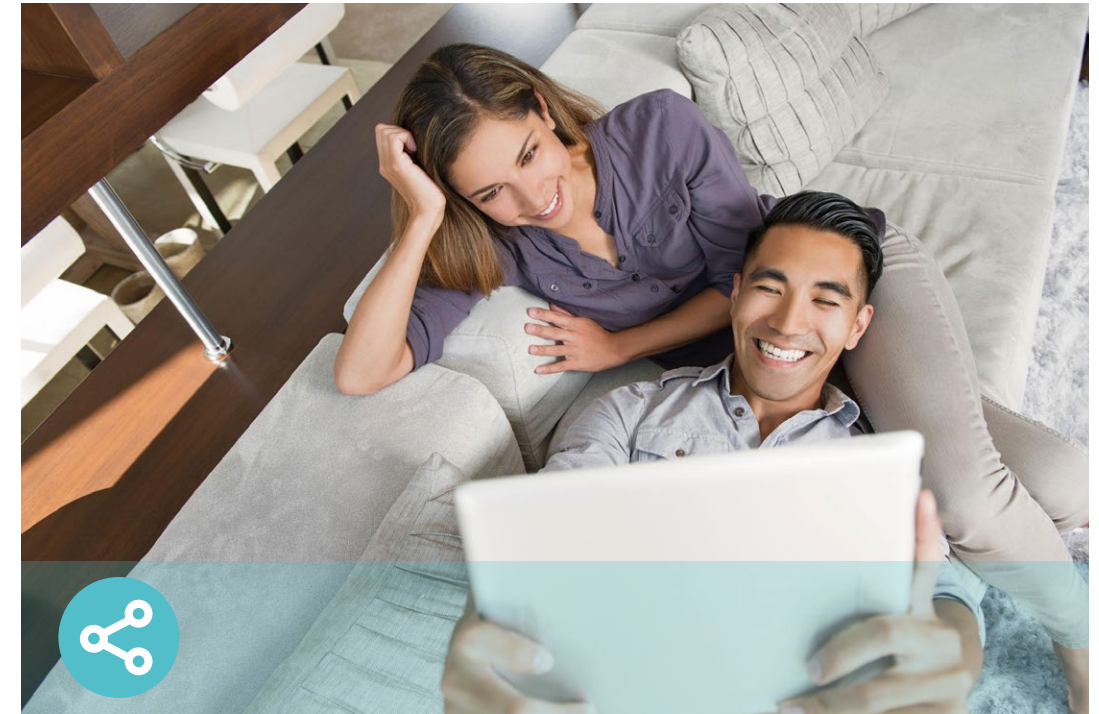
## Ease of Use

- Intuitive Web UI – Ensures quick and simple installation without hassle
- WPS (Wi-Fi Protected Setup) – Help you to quickly and securely connect your devices to the router's network with a tap
- Power On/Off – Conveniently power on or off your router as required
- Hassle-free Management with Tether App – Network management is made easy with the TP-Link Tether app, available on any Android and iOS device



## Security

- HomeShield – TP-Link's premium security services keep your home network safe with cutting-edge features for network and IoT protection
- Guest Network – Provides separate access for guests to secure the home network
- Access Control – Establishes a whitelist or blacklist to allow or restrict certain devices to access the internet
- Encryptions for Secure Network – WPA/WPA2-Personal, WPA2/WPA3-Personal, WPA/WPA2-Enterprise encryptions provide active protection against security threats



## Easy Sharing

- USB Port – Connects external storage devices to rapidly share files, photos, and videos
- Built-in Media Server – Allows you to play music, watch videos and view photos from any device on your network

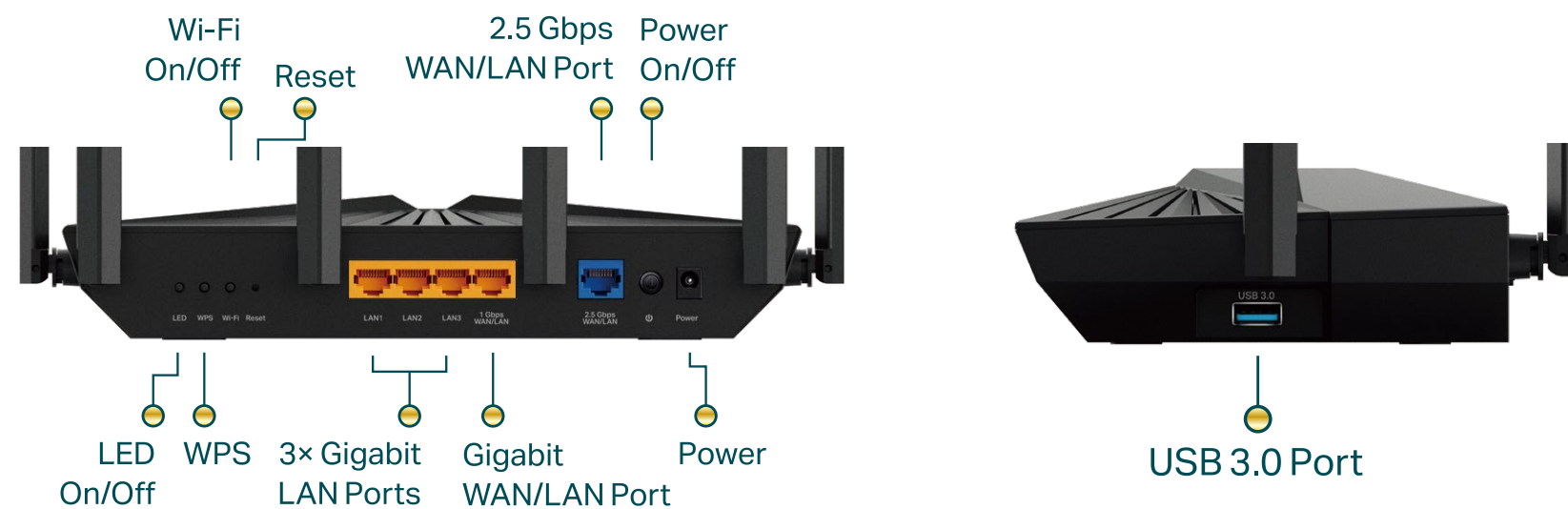
# Specifications

## Wireless

- Standards: IEEE 802.11ax/ac/n/a 5 GHz, IEEE 802.11ax/n/b/g 2.4 GHz
- WiFi Speeds: 5 GHz: 4804 Mbps (802.11ax, HE160), 2.4 GHz: 574 Mbps (802.11ax)
- WiFi Range: 6× Fixed High-Performance Antennas, Beamforming, High-Power FEM, 4T4R
- WiFi Capacity: Dual-Band, 4×4 MU-MIMO, OFDMA, Airtime Fairness, DFS, 6 Streams
- Working Modes: Router Mode, Access Point Mode

## Hardware

- Ethernet Ports: 1× 2.5 Gigabit WAN/LAN Port, 1× Gigabit WAN/LAN Port, 3× Gigabit LAN Ports
- USB Support: 1× USB 3.0 Port
- Buttons: LED On/Off Button, WPS Button, Wi-Fi On/Off Button, Reset Button, Power On/Off Button
- Power: 12 V/2.5 A



## Security

- WiFi Encryption: WPA2, WPA3, WPA/WPA2-Enterprise (802.1x)
- Network Security: SPI Firewall, Access Control, IP & MAC Binding, Application Layer Gateway, HomeShield Security
- Guest Network: 1× 5 GHz Guest Network, 1× 2.4 GHz Guest Network
- VPN Server: OpenVPN, L2TP, PPTP
- VPN Client: OpenVPN, L2TP, PPTP

## Software

- Protocols: IPv4, IPv6
- Service Kits: HomeShield
- OneMesh: Supported
- Parental Controls: HomeShield Parental Controls
- WAN Types: Dynamic IP, Static IP, PPPoE, PPTP, L2TP
- Quality of Service: QoS by Device
- Cloud Service: Auto Firmware Upgrade, TP-Link ID, DDNS
- NAT Forwarding: Port Forwarding, Port Triggering, DMZ, UPnP
- DDNS: TP-Link, NO-IP, DynDNS



# Specifications

## Physical

- Dimensions (W×D×H): 10.3 × 5.7 × 2.0 in (262.2 × 144.3 × 51.0 mm)
- Package Contents:
  - Wireless Router Archer AX5400 Pro
  - Power Adapter
  - RJ45 Ethernet Cable
  - Quick Installation Guide

## Other

- System Requirements:
  - Internet Explorer 11+, Firefox 12.0+, Chrome 20.0+, Safari 4.0+, or other JavaScript-enabled browser
  - Cable or DSL Modem (if needed)
  - Subscription with an internet service provider (for internet access)
- Certifications: FCC, CE, RoHS
- Environment:
  - Operating Temperature: 0°C~40°C (32°F ~104°F)
  - Operating Humidity: 10%~90% non-condensing

## Test Data

- WiFi Transmission Power:
  - CE: <20dBm{2.4GHz}
  - <23dBm{5.15GHz~5.35GHz}
  - <30dBm{5.47GHz~5.725GHz}
  - FCC: <24dBm{5.25GHz~5.35GHz&5.47GHz~5.725GHz }
  - <30dBm{2.4GHz &5.15GHz~5.25GHz&5.725GHz~5.825GHz }
- WiFi Reception Sensitivity:
  - 2.4GHz:
    - 11ac VHT20 MCS0:-95dBm, 11ac VHT20 MCS8:-73dBm, 11ac VHT40 MCS0:-93dBm, 11ac VHT40 MCS9:-69dBm, 11ax HE20 MCS0:-95dBm, 11ax HE20 MCS11:-65dBm, 11ax HE40 MCS0:-93dBm, 11ax HE40 MCS11:-62dBm
  - 5GHz:
    - 11ac VHT20 MCS0:-96dBm, 11ac VHT20 MCS8:-74dBm, 11ac VHT40 MCS0:-93dBm, 11ac VHT40 MCS9:-70dBm, 11ac VHT80 MCS0:-90dBm, 11ac VHT80 MCS9:-65.5dBm, 11ac VHT160 MCS0:-86dBm, 11ac VHT160 MCS9:-61dBm, 11ax HE20 MCS0:-94dBm, 11ax HE20 MCS11:-66dBm, 11ax HE40 MCS0:-91dBm, 11ax HE40 MCS11:-62dBm, 11ax HE80 MCS0:-88dBm, 11ax HE80 MCS11:-59dBm, 11ax HE160 MCS0:-85.5dBm, 11ax HE160 MCS11:-55dBm



For more information, please visit

<https://www.tp-link.com/home-networking/wifi-router/archer-ax5400-pro/>

or scan the QR code left

This device complies with part 15 of the FCC Rules. Operation is subject to the following two conditions: (1) This device may not cause harmful interference, and (2) this device must accept any interference received, including interference that may cause undesired operation.

Specifications are subject to change without notice. All the brands and product names are trademarks or registered trademarks of their respective holders.

<sup>1</sup>Maximum wireless signal rates are the physical rates derived from IEEE Standard 802.11 specifications. Actual wireless data throughput and wireless coverage are not guaranteed and will vary as a result of network conditions, client limitations, and environmental factors, including building materials, obstacles, volume and density of traffic, and client location.

<sup>2</sup>Use of Wi-Fi 6 (802.11ax) and features including OFDMA, 1024-QAM, HE160, and Target Wake Time requires clients to also support the corresponding features. Actual power reduction by Target Wake Time may vary as a result of network conditions, client limitations, and environment factors. The 160 MHz bandwidth may be unavailable in the 5 GHz band in some countries/regions due to regulatory restrictions.

<sup>3</sup>HomeShield includes the Free Basic Plan. Fees apply for the Pro Plan. Visit [tp-link.com/home-shield](https://www.tp-link.com/home-shield) for more information

<sup>4</sup>Use of MU-MIMO and/or WPA3 requires clients to also support the corresponding features.

<sup>5</sup>A separate modem or gateway may be required. PPPoE, Static IP, and Dynamic IP are supported. PPTP and L2TP may also be supported under certain configurations.

<sup>6</sup>Actual internet speeds are limited by the internet bandwidth access from an Internet Service Provider.

This router may not support all the mandatory features as ratified in Draft 3.0 of the IEEE 802.11AX specification.

Further software upgrades for features availability may be required.

© 2023 TP-Link